

**HSG (95) 18
to
HTM 01-05**

(A New Approach)

**Ken Holmes
(Public Health Engineer)**

Agenda

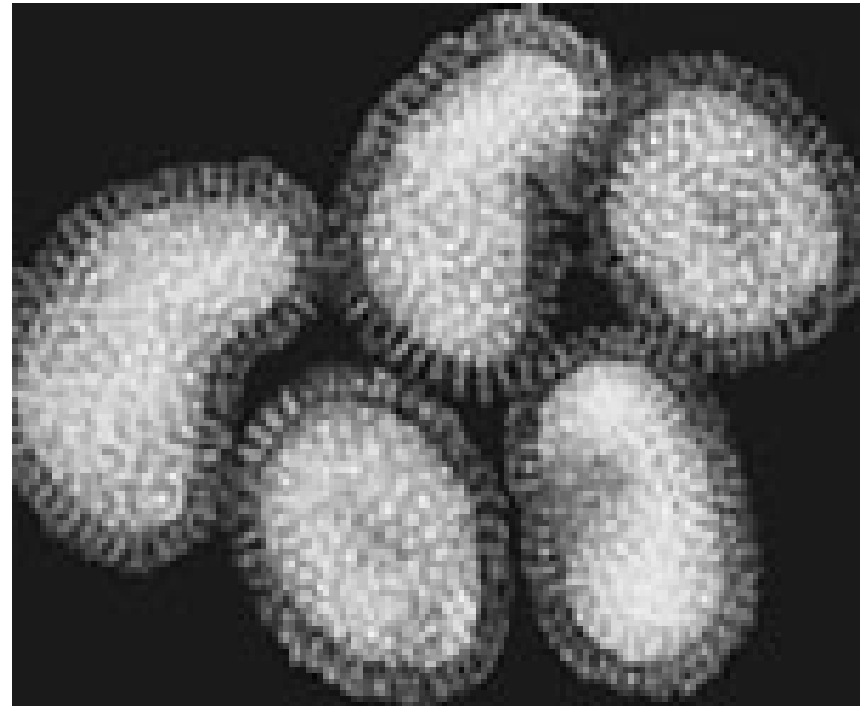
1. Introduction
2. Overview
3. HSG (95) 18
4. Guidance Revision Scope
5. Regulation
6. Summary

Introduction

1. Evidence
2. Policy
3. Guidance

The key issues.

- Protecting our patients and staff every day.
- Maintaining effective and appropriate services.
- Knowing what colonisation and infection characteristics are present.
- Awareness of Policy, Standards & Guidance.
- Being ready to deal with local outbreaks or epidemic disease.



Flu virus.

Overview

- Evidence based approach to engineering contributions.
- Use of a rational coherent model linked to patient care and clinical services.
- Drawing together and updating existing guidance.
- Proactive approach.
- Application of new technologies.
- Integration into DH Forward Planning.

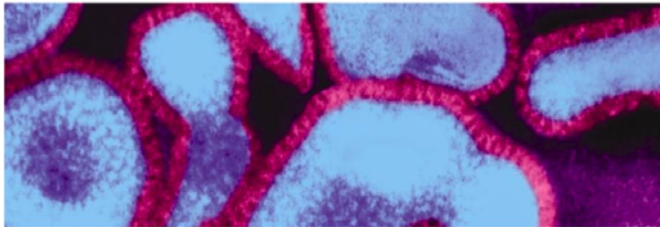
The Estates perspective.

- Understanding infection control both in general and more clinical service area specific ways.
- Designing in precautions - designing out hazards.
- Engineering in precautions - engineering out failures.
- Making design, engineering and practices work together in simple ways.
- Use of Standards.



Large droplet transmission.

Basic Statements of Policy. Chief Medical Officer.



Getting Ahead of the Curve

A strategy for combating infectious diseases
(including other aspects of health protection)



Winning Ways

Working together to reduce Healthcare
Associated Infection in England

Report from the Chief Medical Officer

Policy background.

Getting ahead of the curve

- A strategy for combating infectious diseases (CMO - 2002).
- Created The Health Protection Agency for England and Wales (CMO - initiative).

Winning Ways.

- Significant research funding particularly directed towards new forms or sources of infection.
- NHS Plan co-operation with Pharmaceutical industry.
- Working with National Patient Safety Agency.

Three key precautions.

“Winning ways.”

For at least some
infection types
evidence supports:

- Cleaning.
- Hand hygiene.
- Selective use of isolation and specialist nursing techniques.
- Improvements in the built environment.



Rationale for precautions in healthcare

Transmission.

- Microorganisms are transmitted in hospitals by a number of routes and mechanisms.
- The same microorganism may be transmitted by more than one route.
- There are nine main routes of transmission:
1) contact (direct & indirect), 2) droplet, 3) nucleate, 4) airborne, 5) faecal-oral, 6) vector, 7) fomite, 8) common vehicle
- Most guidelines focus on 1 to 4 as these are most common in the western world in terms of nosocomial infections

HSG (95) 18

Revision Scope

- Four elements of work:-
 1. EVIDENCE
 2. POLICY
 3. RESEARCH
 4. GUIDANCE

Guidance Revision Scope

- Three sections:-
- MANAGEMENT
- ENVIRONMENT
- EQUIPMENT

Guidance Revision Scope

- **Management**
 - Scope
 - Policy responsibility, CMO, CNO, NPSA and structure?
 - Personnel
 - Training
 - Regulatory framework (medical devices)(Product Liability)
 - Standards and guidance (BS,EN,ISO etc)
 - Quality system
- CE marking?

Guidance Revision Scope

- **b. cycle elements**
 - procurement/acquisition
 - wash/disinfect
 - dry
 - finish
 - inspect/dispose/reject
 - pack
 - store
 - transport
 - store
 - use
 - sort/segregate
 - store
 - transport
- **work flow**
 - categories of work
 - processes (thermal, chemical and others)
 - Tracking & Traceability
 - Capacity
- segregation etc (resulting from research)

Guidance Revision Scope

Equipment

1. (SQ,IQ,OQ,PQ)

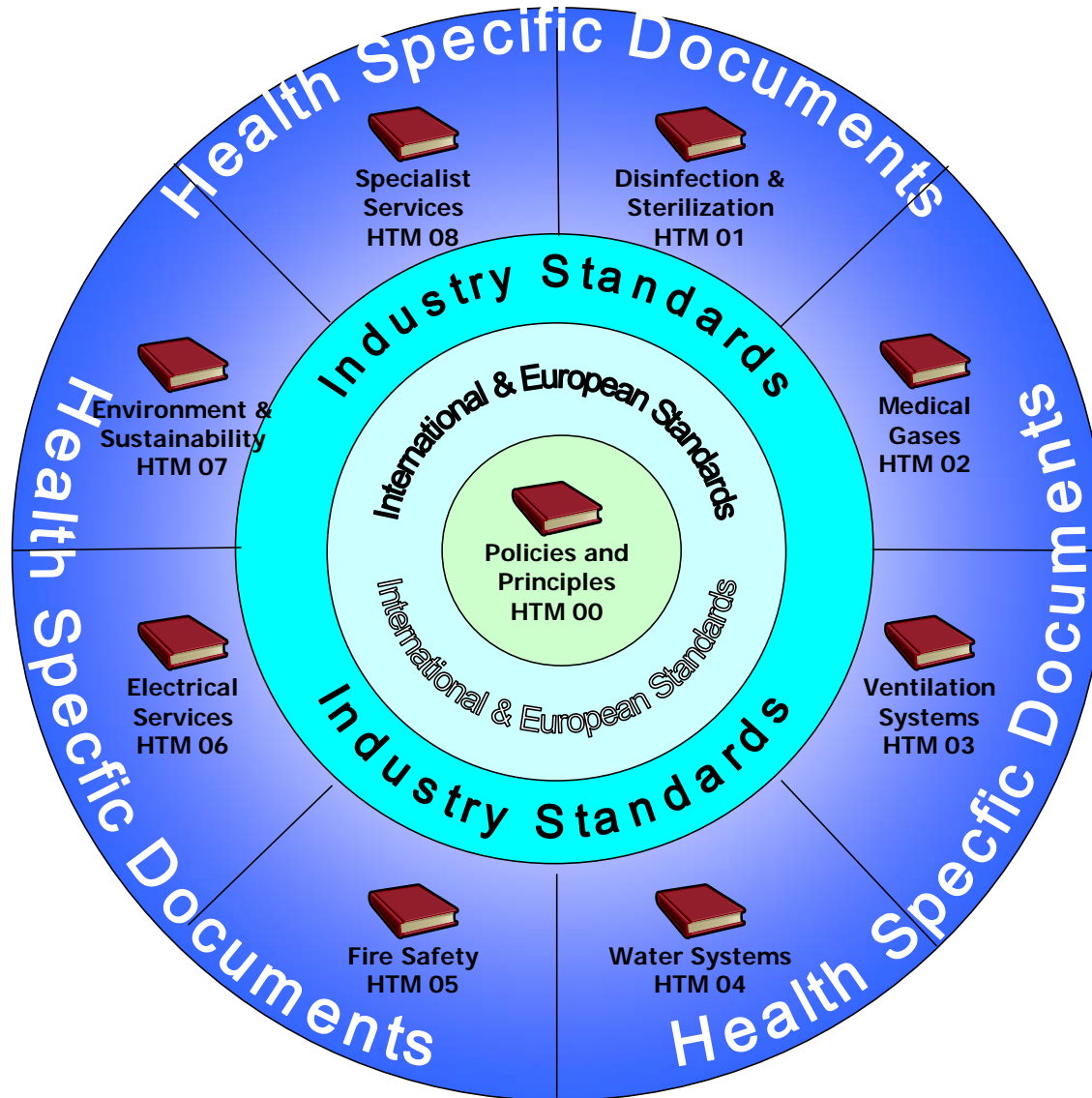
1. Monitoring , Validation/Verification

Guidance Revision Scope

DECONTAMINATION LIFE-CYCLE OF HEALTHCARE LAUNDRY



Engineering out HCAI.



Regulation

- HASAWA
- COSHH
- Factories Act
- Health Act
- Healthcare Commission (HCC)
- Standards and Guidance

New Code of Practice.

The prevention and control of healthcare associated infection (HCAI)

- To be effective, infection prevention and control activities have to be embedded into everyday practice and applied consistently by everyone.
- The effective prevention and control of healthcare associated infections relies on an accumulating body of evidence that takes account of changes in epidemiology and advances in medical practice.

Healthcare Standards.

HCAI and MRSA.

- Healthcare Commission.
- **Standard (04)** Healthcare organisations keep patients, staff and visitors safe by having systems to ensure that:
 - a) the risk of healthcare acquired infection to patients is reduced, with particular emphasis on high standards of hygiene and cleanliness, achieving year on year reductions in MRSA.
 - e) the prevention, segregation, handling, transport and disposal of waste is properly managed so as to minimise the risks to the health and safety of staff, patients, the public

Summary.

- Evidence based approach to engineering contributions.
- Use of a rational coherent model linked to patient care and clinical services.
- Drawing together and updating existing guidance.
- Proactive approach.
- Application of new technologies.
- Integration into DH Forward Planning.



Any Questions ?

Ken Holmes
(Public Health Engineer)

Department of Health

Thanks for listening